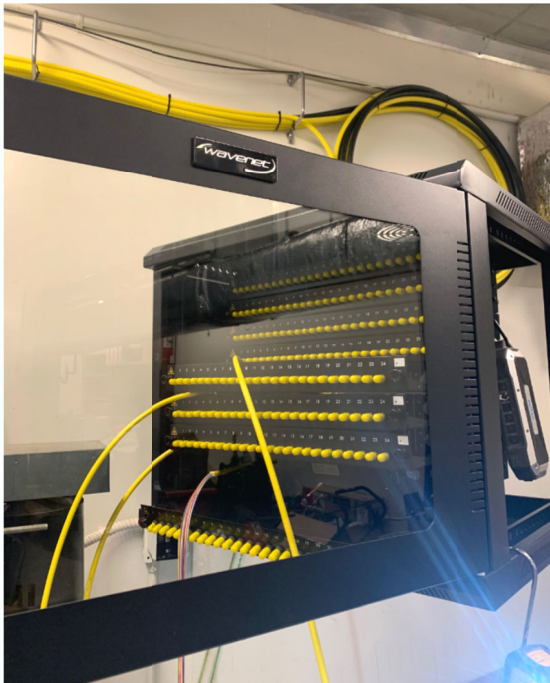


Double Section Swing Out 6U Wall Mount Cabinets

Product Detail



Application



Overview

Wavenet CBTF Series Double Section Swing Out 6U Wall Mount Cabinets are suitable for intermediate distribution frame (IDF) locations such as server room audio/video/security applications, wiring closets, manufacturing areas, warehouses, or anywhere where remote networking equipment needs to be protected and store.

Features

- Cable entry and exit on top and bottom knockouts
- Lockable front, rear doors and side panels
- Reversible right or left handed front door
- Integrated with ground point for maximum protection
- Number markings on rails with adjustable depth
- Made with tempered glass shatter resistance front door
- (1) 68CFM fan with one extra slot for additional fan
- 24" depth, useable is 18", (2 sets) of 16" on center mount
- Ships fully assembled to save time
- 70 lbs. load capacity when properly secured

Standards & Compliance

- ANSI/EIA 310-D,
- IEC60297-2, DIN41194 Part 1, DIN41494; Part 7
- RoHS

Package Includes

- Double Section Swing Out 6U Wall Mount Cabinet, 1 PC.
- Mounting Hardware, 1 –Pack w/2 keys

Part Number	U Size	Dimensions
CBTF-WM6U-SW	6U	23.6" W X 14.6" H X 23.6" D