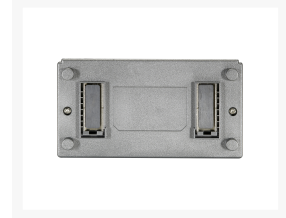


FSW-0508TX 5-Port Fast Ethernet Switch

Product Images



Short Description

- Provides flexibility of 5x 10/100BASE-TX ports

- 10/100Mbps, full/half-duplex, auto-negotiation, auto-MDI/MDIX
- Supports 2K MAC address auto-learning and auto-aging
- IEEE 802.3x Flow Control protects against lost packets for reliable data transmission
- Magnetic base for easy placement
- Compact, lightweight design

Description

LevelOne's FSW-0508TX 5-Port Fast Ethernet Switch combines efficient technology with a unique design. This switch is equipped with 5 10/100Mbps ports capable of reaching the highest bandwidths up to 200Mbps for each port to provide workstations with a congestion-free data pipe for simultaneous access to the server. Each port of the FSW-0508TX supports an auto-negotiation function that can automatically set the best possible bandwidth when a connection is established with another network device. The store-and-forward switching mechanism ensures that no error packets occur and provide maximum efficiency and stability. With Auto-MDIX function, this switch is expandable by cascading two or more switches together by uplinking directly without cable selection hassle. Its small and compact size is specially designed to fit in limited-space locations for SOHO or home usage. Users can immediately access any needed features simply by attaching the cables and turning on the power. For instant error detection, the switch is equipped with a full range of LEDs to help you monitor and troubleshoot problems on your network.

Additional Information

Console RJ45	5
Harmonized System (HS) code	851762
Customs product code (TARIC)	8517620000
Color	Grey
EAN	4015867109533
Model Number	FSW-0508TX
Grade	Commercial
PoE Supported	No
Manageable	No
Fanless	Yes
Concurrent ports	Total 5.00
Approval and Compliance	FCC, CE, RoHS
Operating humidity	0% RH ~ 90% RH
Operating temperature	0°C ~ 40°C
Storage humidity	0% RH ~ 90% RH
Storage temperature	-20°C ~ 70°C
Package Contents	FSW-0508TX, Power Adapter, Quick Installation Guide
Switching capacity	1 Gbps
Data Rate	100Mbps
Power supply included	Yes

Standard	IEEE 802.3 10-BASE-T (Ethernet) IEEE 802.3u 100-BASE-TX (Fast Ethernet) IEEE 802.3x Flow Control (full-duplex flow control) IEEE 802.3 10-BASE-T (Ethernet) IEEE 802.3u 100-BASE-TX (Fast Ethernet) IEEE 802.3x Flow Control (full-duplex flow control) IEEE 802.3 10-BASE-T (Ethernet) IEEE 802.3u 100-BASE-TX (Fast Ethernet) IEEE 802.3x Flow Control (full-duplex flow control) IEEE 802.3 10-BASE-T (Ethernet) IEEE 802.3u 100-BASE-TX (Fast Ethernet) IEEE 802.3x Flow Control (full-duplex flow control) IEEE 802.3 10-BASE-T (Ethernet) IEEE 802.3u 100-BASE-TX (Fast Ethernet) IEEE 802.3x Flow Control (full-duplex flow control) IEEE 802.3 10-BASE-T (Ethernet) IEEE 802.3u 100-BASE-TX (Fast Ethernet) IEEE 802.3x Flow Control (full-duplex flow control)
Mount	Desk mount
Flash memory size	48KB
MAC address table	2K
Indicators	Power; Link/Active
Backplane (Gbps)	1
Product weight (kg)	0.16
Dimensions (W x D x H)	69 x 30 x 125 mm

