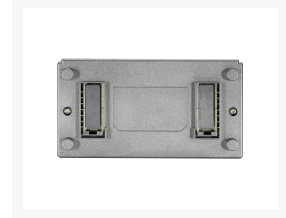


FSW-0808TX 8-Port Fast Ethernet Switch

Product Images



Short Description

- Provides flexibility of 8 x 10/100BASE-TX ports

- 10/100Mbps, full/half-duplex, auto-negotiation, auto-MDI/MDIX
- Supports 1K MAC address auto-learning and auto-aging
- IEEE 802.3x Flow Control protects against lost packets for reliable data transmission
- Magnetic base for easy placement
- Quick and easy installation

Description

The LevelOne FSW-0808 is a wire-speed, non-blocking networking device that provides 8 ports 10/100Mbps Ethernet connections. All ports support auto-negotiation and auto-MDI/MDIX sensing, eliminating the need for crossover cables or Uplink Ports. Each port can be used as general network port or as connecting port into a router, server, hub or another network switch.

Easy Configuration and MaintenanceThe LevelOne FSW-0808TX does not require software configuration. Users can immediately use any features of this product simply by attaching the cables and turning on the power. For instant error detection, the switch is equipped with a full range of LEDs to help you monitor and troubleshoot problems on your network.

Compact Size DesignThis switch is compact specially designed to fit on the desktop or in other space-limited locations. The FSW-0808TX provides an ideal solution for businesses that crave a reliable network to exchange large data files and multimedia information with bandwidth-starving workgroup, departments, and offices.

Additional Information

| | |
|------------------------------|---|
| Console RJ45 | 8 |
| Harmonized System (HS) code | 851762 |
| Customs product code (TARIC) | 8517620000 |
| Color | Grey |
| EAN | 4015867109540 |
| Model Number | FSW-0808TX |
| Grade | Commercial |
| PoE Supported | No |
| Manageable | No |
| Fanless | Yes |
| Concurrent ports | Total 8.00 |
| Approval and Compliance | FCC, CE, RoHS |
| Package Contents | FSW-0808TX, Quick Installation Guide, Power Adapter |
| Switching capacity | 1.6Gbps |
| Data Rate | 100Mbps |
| Power supply included | Yes |
| Standard | IEEE 802.3 10-BASE-T (Ethernet) IEEE 802.3u 100-BASE-TX (Fast Ethernet) IEEE 802.3x Flow Control (full-duplex flow control) IEEE 802.3 10-BASE-T (Ethernet) IEEE 802.3u 100-BASE-TX (Fast Ethernet) IEEE 802.3x Flow Control (full-duplex flow control) IEEE 802.3 10-BASE-T (Ethernet) IEEE 802.3u 100-BASE-TX (Fast Ethernet) IEEE 802.3x Flow Control (full-duplex flow control) IEEE 802.3 10-BASE-T (Ethernet) IEEE 802.3u 100-BASE-TX (Fast Ethernet) IEEE 802.3x Flow Control (full-duplex flow control) IEEE 802.3 10-BASE-T (Ethernet) IEEE 802.3u 100-BASE-TX (Fast Ethernet) IEEE 802.3x Flow Control (full-duplex flow control) IEEE 802.3 10-BASE-T (Ethernet) IEEE 802.3u 100-BASE-TX (Fast Ethernet) IEEE 802.3x Flow Control (full-duplex flow control) IEEE 802.3 10-BASE-T (Ethernet) IEEE 802.3u 100-BASE-TX (Fast Ethernet) IEEE 802.3x Flow Control (full-duplex flow control) |
| Mount | Desk mount |

| | |
|------------------------|--------------------|
| Flash memory size | 96KB |
| MAC address table | 1K |
| Indicators | Power; Link/Active |
| Backplane (Gbps) | 1.6 |
| Product weight (kg) | 0,16 |
| Dimensions (W x D x H) | 69 x 30 x 125 mm |

